

Penrith Railway Bridge

Castlereagh Road, Penrith

Digital Advertising Sign – Review of heritage constraints

For JCDecaux

Summary

A digital advertising and information screen measuring 12.5 metres by 3.3 metres is proposed to be mounted on the railway bridge above the Castlereagh Road at Penrith. The railway bridge is not within the State Heritage Register (SHR) curtilage of the Penrith Railway Station Group. It is not within the curtilage of the s.170 Transport Heritage Register curtilage. The railway bridge is within the curtilage of the Penrith Local Environmental Plan heritage item I88. See Figure 1 for heritage overlays.

No approvals are required under the Heritage Act 1977 (NSW).

Notification to Penrith Council may be required by the State Environmental Planning Policy (Transport and Infrastructure) 2021, due to the local heritage listing.

Heritage Listings

- Penrith Railway Station Group is listed on the NSW State Heritage Register SHR: 01222
- Penrith Railway Station Group and residence is included in the Transport for NSW Heritage and Conservation Register (s.170) of the Heritage Act 1977 (NSW) #4801032.

The railway bridge over Castlereagh Road is not within the curtilage of these items.

- Penrith Railway Station group is listed as an item of environmental heritage in Schedule 5 of Penrith Local Environmental Plan 2010, item ID. I88.
- Penrith Station Master's House (former) is listed as an item of environmental heritage in Schedule 5 of Penrith Local Environmental Plan 2010, item ID. I87.

The railway bridge over Castlereagh Road is within the curtilage of the PLEP2010 heritage item 188.

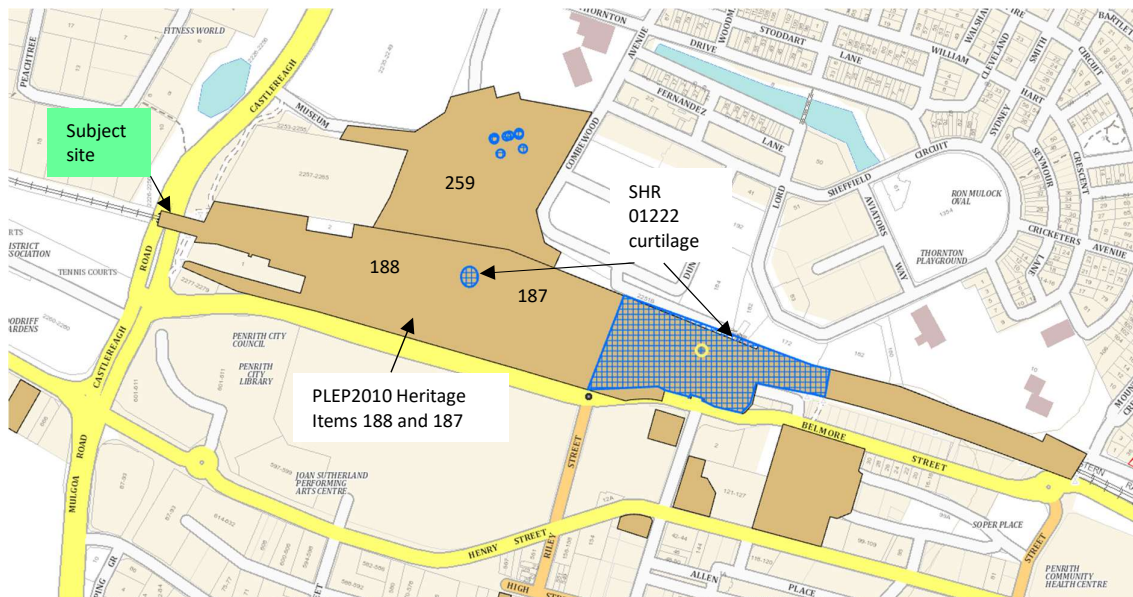


Figure 1. PLEP2010 Heritage Item ID.188 is shown along the rail corridor coloured brown. Included within the railway curtilage is Heritage Item ID. 187. The SHR curtilage is shown in blue hatching. Snap shot from NSW Planning Portal

Development Proposed

It is proposed to install a new digital screen on the railway bridge over Castlereagh Road. The sign is to be 12530mm wide and 3350mm tall.

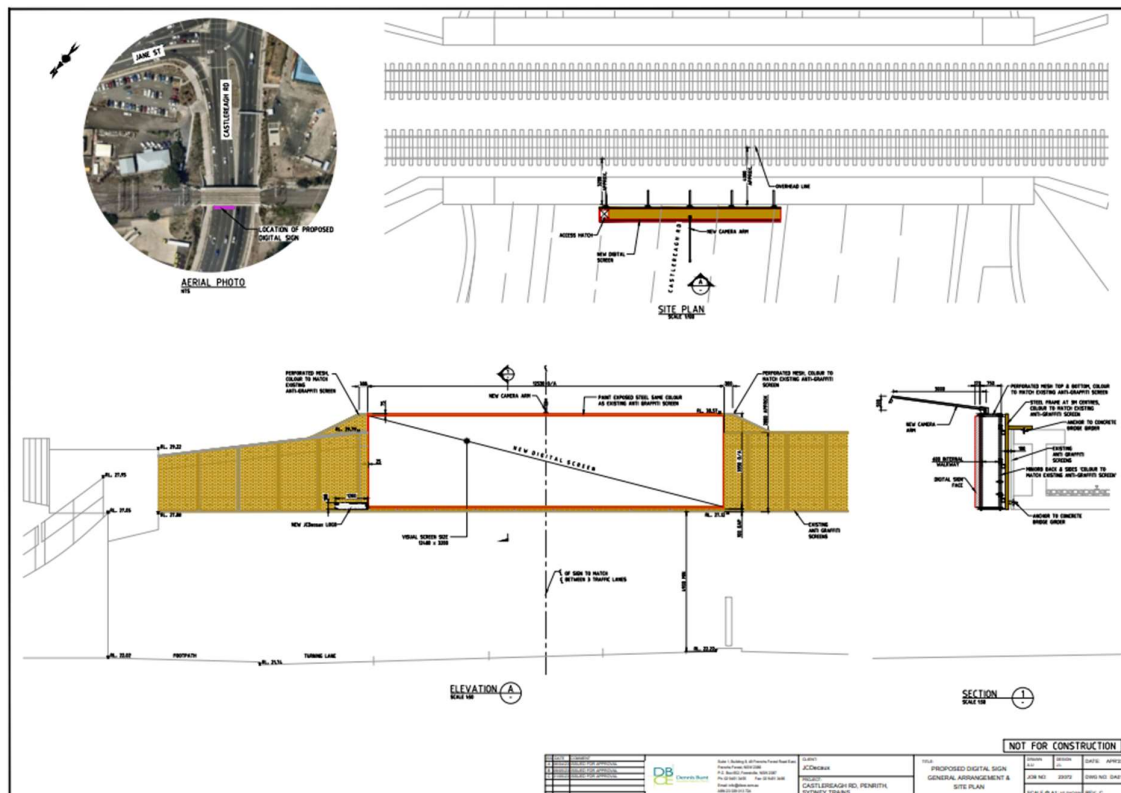


Figure 2. Proposed digital screen details. (Dennis Blunt Consulting Engineer 2023)



Figure 3. The original bridge (JCDecaux)



Figure 4. Photomontage of proposed sign (JCDecaux)

Heritage Impact Assessment

There will be no impact upon Penrith Railway Station Group and residence as described in the NSW SHR or s.170 heritage registers as the development is outside the curtilages of these items.

The Penrith Local Environmental Plan 2010 heritage schedule lists Penrith Railway Station Group (ID188) and includes the rail bridge in its heritage map. The map includes the whole of Lot 31 DP1086586 although the railway bridge is of recent construction. The statement of significance for the local heritage listing does not include the railway bridge.

Statement Of Significance

Completed in 1863 and subsequently upgraded, the railway station demonstrates phases in the development of Penrith associated with the coming of the railway and the need to improve facilities to satisfy increasing demand and/or regional development. The historic buildings and structures are excellent examples of Victorian railway architecture that exemplify Victorian attitudes to railway construction. The complex is unique in the LGA and western Sydney in consideration of its scale and diversity. It continues to provide the traditional rail based gateway to the town. The station group is important in the historic townscape of Penrith and is attractively set against the backdrop of the Blue Mountains and open paddock lands to the north which offer distant views to historic places such as Combewood. (NSW Heritage, 2023)

The proposed development will not have an adverse impact upon the heritage values of the locally listed heritage item.

A handwritten signature in black ink, appearing to read 'L Thom'.

Louise Thom

Louise Thom Heritage

1/11/2023



Figure 5. State heritage register curtilage for Penrith Railway Station Group.

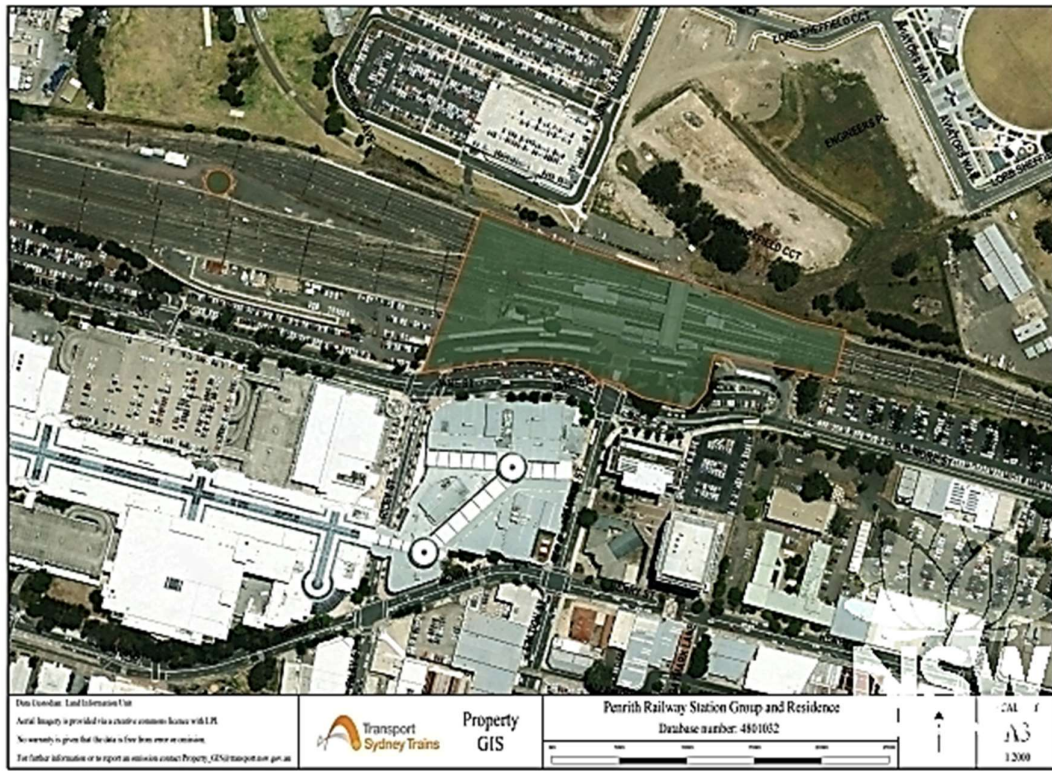


Figure 6. s.170 curtilage for Penrith Railway Station Group and Residence